

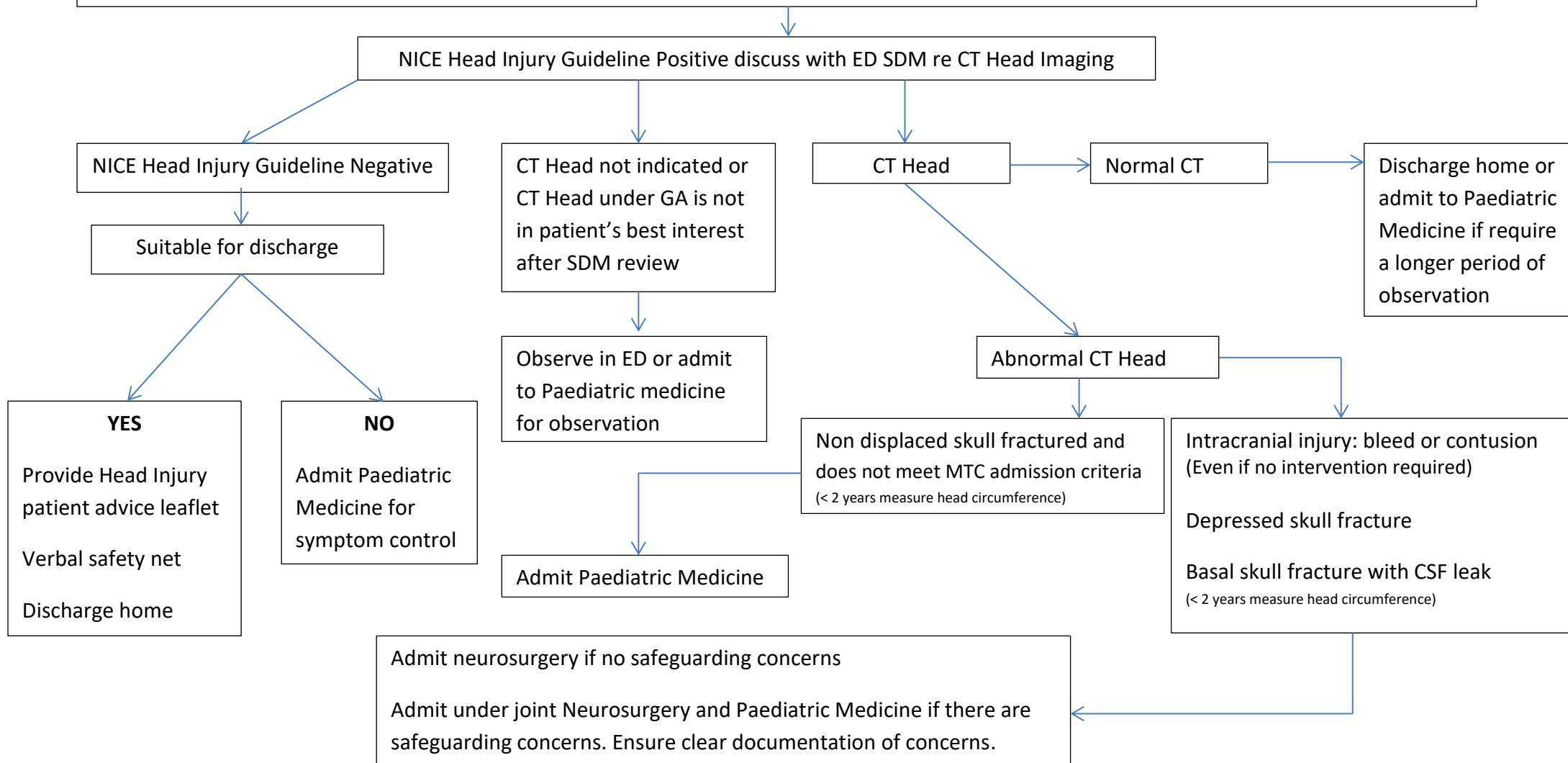
## Initial Head Injury Attendance

### Primary attendance of child to PED with Isolated Head Injury

The following must be admitted under Paediatric Surgery or appropriate MTC Specialist Team (confirmed isolated injury only) as per WYMTN agreement:

1. Primary or Secondary MTC transfers, 2. Polytrauma (confirmed/ suspected) or 3. Tertiary Specialist Referral

Patients triggering the major trauma triage tool should not be admitted under Paediatric Medicine





## Repeat Head Injury Attendance

Secondary attendance post primary head injury or ongoing concussion symptoms 6 weeks after sustaining primary head injury

NICE Head Injury Guideline Red flags

**YES**

Discuss with SDM and consider imaging (CT/ MRI)

**NO**

Discuss with SDM to identify if suitable for discharge with the following:

No follow up (usually if < 6 weeks since symptom onset, reinforce concussion advice)

Refer persistent (>6 weeks) new difficulties post head injury to neurorehabilitation team (by completing ED to neurorehabilitation referral form and sending by email to [lynsey.kite@nhs.net](mailto:lynsey.kite@nhs.net)), including:

- Persistent new cognitive / behavioural / sleep difficulties
- Persistent new medical symptoms (including dizziness and headaches) since injury **with no red flags**

Once Patient Pass is setup all neurorehabilitation referrals must be made via Patien Pass.