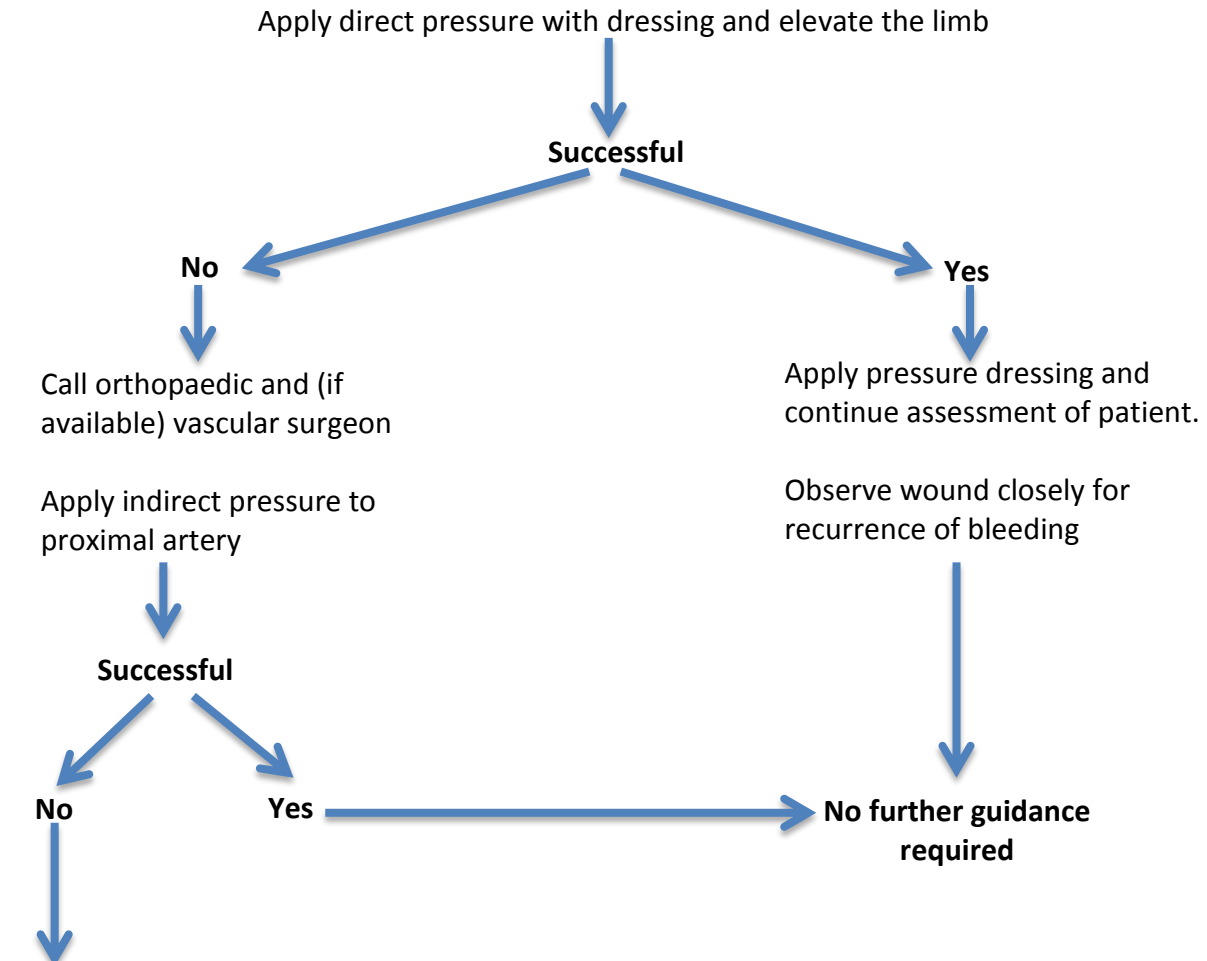


Extremity Bleeding - Role of Tourniquet



UNSUCCESSFUL

Apply tourniquet using pneumatic cuff in preference to Combat Application Tourniquet (CAT)

Apply at least 5cm proximal to the wound but as distally as possible. A tourniquet **does not** have to be over a single long bone.

THIS IS NOW TIME CRITICAL SURGICAL EMERGENCY

Record tourniquet time

Ensure presence of suitably senior surgical teams (transferring to MTC if necessary)

ALWAYS ENSURE ALL STAFF CARING FOR THE PATIENT ARE AWARE IF A TOURNIQUET IS IN USE

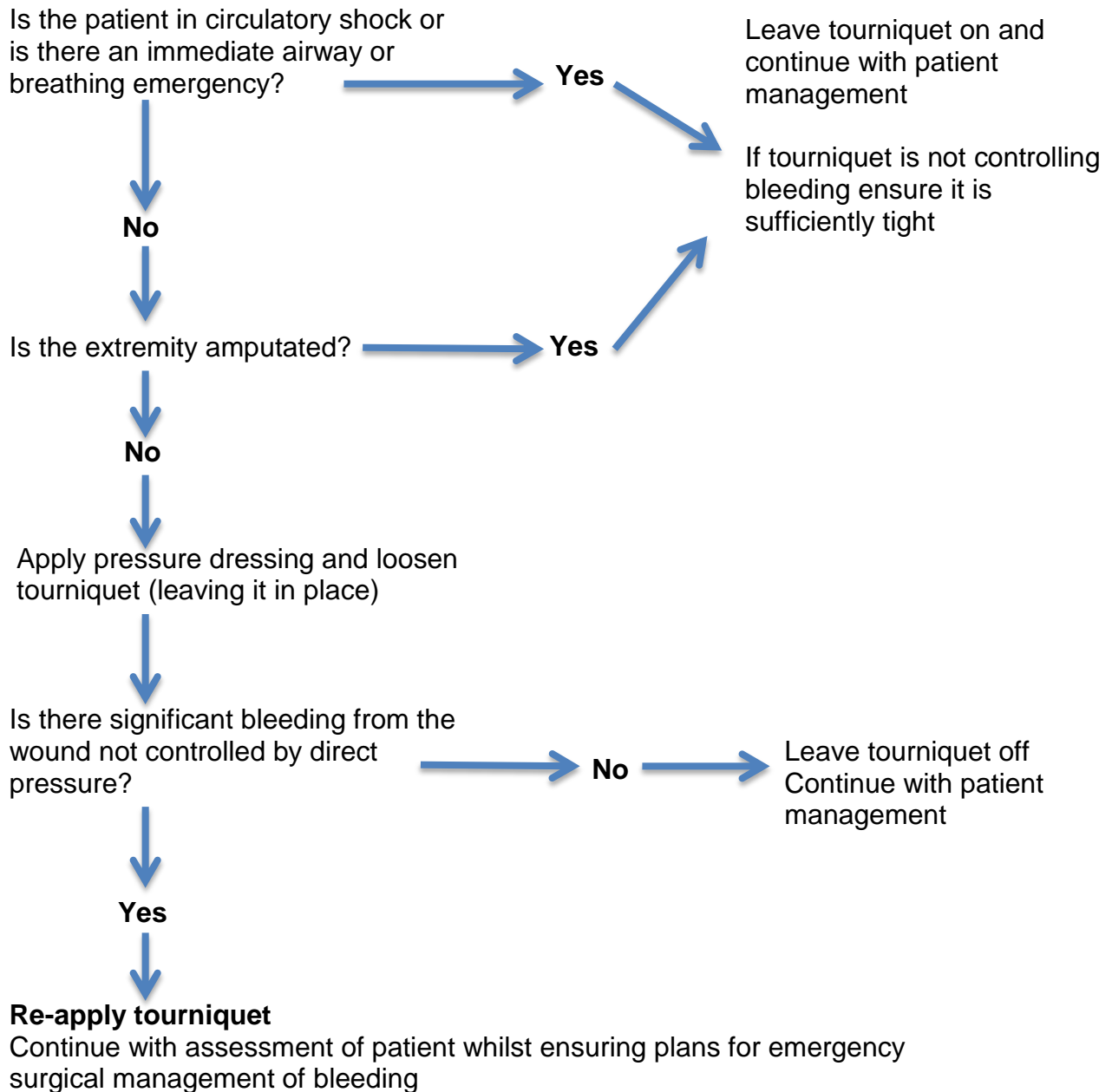
PTO

Approach to the patient with a tourniquet in situ

THIS IS TIME CRITICAL SURGICAL EMERGENCY

Ensure orthopaedic and (if available) vascular surgical teams are present (contact before patient arrival if possible)

Ensure tourniquet time recorded



If possible replace CAT with pneumatic tourniquet pending definitive care

ALWAYS ENSURE ALL STAFF CARING FOR THE PATIENT ARE AWARE IF A TOURNIQUET IS IN USE