



West Yorkshire
Major Trauma Network

West Yorkshire Major Trauma Network

Adult Rehabilitation Pathway

Edition 1 - January 2016

Pathway for Adult Major Trauma Rehabilitation in West Yorkshire

Contents

Pathway for Adult Major Trauma Rehabilitation in West Yorkshire	1
1. Introduction.....	3
1.1. Background.....	3
1.2. Examples of Patients with Complex Rehabilitation Need	3
2. Rehabilitation Pathways.....	5
2.1 Major trauma patients in Leeds General Infirmary	5
2.2 Trauma patients outside of Leeds General Infirmary	6

1. Introduction

1.1. Background

Many patients who have multiple injuries can be expected to make a full recovery and return to their usual level of functioning within a few months. The Major Trauma Centre at Leeds and all of the Trauma Units across West Yorkshire have inpatient and outpatient rehabilitation teams which can support such patients in recovering from their injuries.

A proportion of patients will experience disability in the longer term and have more specialist rehabilitation need if they are to reach their optimal functional level in a reasonable time frame. This guideline is intended to aid clinicians in identifying such complex patients and to access appropriate rehabilitation services for them as quickly as possible.

Availability of specialist rehabilitation services can be quite variable across West Yorkshire. The majority of major trauma patients should present initially to Leeds General Infirmary and those with complex rehabilitation need should be assessed by the hyperacute rehabilitation team. In most instances, the hyperacute rehabilitation team will identify patients with complex need from the trauma admission lists and review them proactively, but in other cases the team would need alerting in order for them to review a particular patient. Patients from outside of Leeds would be repatriated back to their local hospital once medically stable and the acute injuries dealt with. These patients should have a clear, individualised rehabilitation pathway identified for them prior to repatriation. However in some instances trauma teams at other centres may also require specialist rehabilitation advice for a patient. This guideline is also intended to assist with accessing rehabilitation advice for these patients too.

Please note this guideline covers adult patients only (16+)

1.2. Examples of Patients with Complex Rehabilitation Need

The following are some examples of types of patient who would have complex rehabilitation need. The list is not exhaustive and clinicians should be encouraged to seek specialist rehabilitation advice if they feel it is warranted.

- Patients with neurological trauma (brain injury, spinal injury, peripheral nerve injury or complex muscle injury)
- Patients with secondary neurological injury (i.e. hypoxic brain injury)
- Patients with suspected new cognitive impairment despite normal imaging
- Patients with acquired limb loss
- Patients with behavioural problems (i.e. from delirium or from established cognitive impairment)

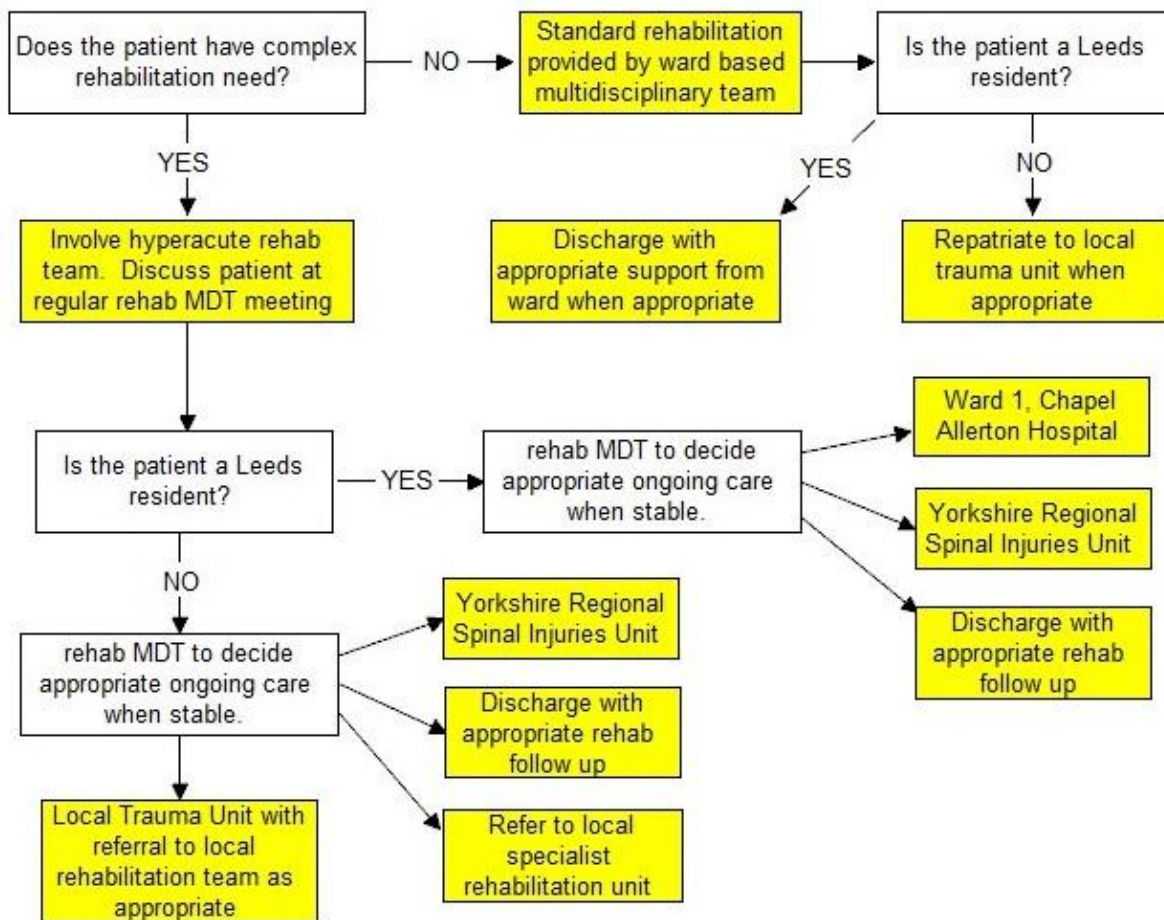
- Patients with chronic health conditions which will impact on recovery (i.e. cerebral palsy, complex cardiorespiratory disease, previous stroke)
- Patients with acquired visual or hearing impairment

1.3. Directory of Rehabilitation Services

For information on all available services across the West Yorkshire Major Trauma Network please access the website www.wymtn.com.

2. Rehabilitation Pathways

2.1 Major trauma patients in Leeds General Infirmary



2.2 Trauma patients outside of Leeds General Infirmary

